

Clippings

JAN 2018

NEWSLETTER FROM THE GARDEN CLUB OF HINGHAM

✧ *A Message from the President* ✧

Dear Members,

Our gardens have been put to bed, the leaves have fallen and thoughts of the coming winter are more frequent as the days are dark by 4:30. While the outdoor work is done, I don't plan to take a break over the winter from my gardening interests. Ideas and information that I picked up from our fall speakers and field trips will be put to good use. Planning some new garden beds and making changes to existing ones are on my agenda. Our September speaker presented ideas for a white garden but the field trip to the Blue Garden was also inspiring! I will definitely be making some holiday floral arrangements and our November speaker provided me with some great tips. I'll need to sit through many more lectures though to come close to the dazzling designs we saw on the field trip to Blithewold!

Our fall social was a well-attended, fun and successful event thanks to our hosts, Nancy and Michael Herde, and our hardworking Hospitality Committee. They worked tirelessly on our Holiday Luncheon as well.

I hope that as you drive through town, you take notice of the lovely wreaths assembled by the Wreath Committee that are evident on the doors of many shops and homes. This year the committee also decorated and hung an extra large wreath on the stone foundation of the stairs leading up to the Hingham Heritage Museum. It is a great place for a family photo!

I hope you all had a wonderful holiday!

Joyce

UPCOMING EVENTS:

JAN 17: MEETING

FEB 14: MEETING

MAR 21: MEETING

APR 25: MEETING

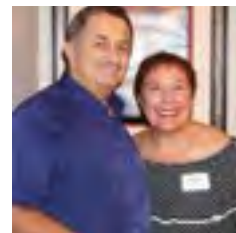
APR 26: FIELD TRIP

By the sea, By the sea, By the beautiful sea...



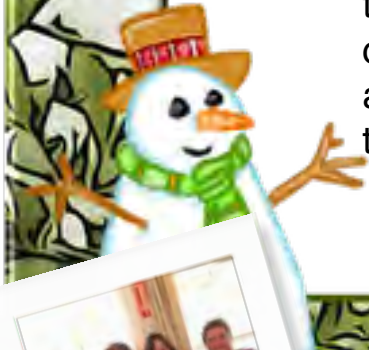
On the evening of October 14th Garden Club members and their guests gathered at the home of Nancy and Michael Herde to socialize, enjoy fine food and watch the beautiful sunset over Hingham Harbor. The Herde home was decorated in a web of amazing Halloween displays and included a Christmas room that would wow even Scrooge! Once the sky darkened, Michael Herde dazzled everyone with his skill twirling flaming torches on the lawn.

Many thanks to Hospitality co-chairs Erin Bradley and Meg Glazer and to the Herdes for a spectacular party!



What a lovely time we all had...sharing stories, sharing plans for the upcoming holidays and sharing...lots of great food! So nice to see almost 60 members of the GCH gather at the Lightkeeper's Cottage in Cohasset for the annual holiday luncheon. The buffet tables were filled with colorful salads, casseroles and lovely hams for lunch. We also welcomed plenty of luscious treats from our members that, whether baked in their kitchens or purchased from their favorite bakery, ended the afternoon on a sweet note with a good cup of coffee to send the ladies out into the cold afternoon. Many thanks to the lovely floral creations that made each dining table sparkle...all were different and presented a unique take on the holiday theme! Happy Holidays to all

- Meg Glazer



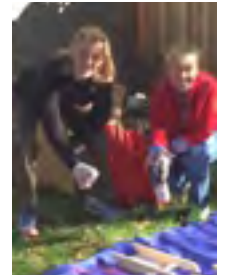
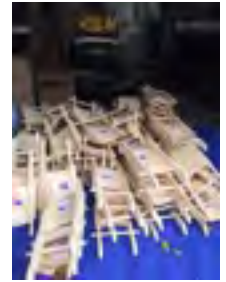


Tis the season...

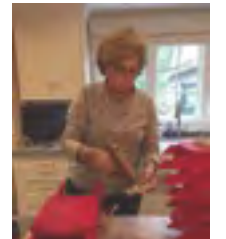
Wreath season started this summer when Carol Dunphy designed the Garden Club's Holiday Wreath, which featured an old fashioned red wooden sled and bright white snowflakes, all reusable after the season. Carol's choice of a red and white snowflake holiday bow pulled together this year's Winter

Wonderland theme. After all the design prep and organization, it was now time to start accessory production.

In early October, the wreath committee began meeting weekly on Tuesdays at Joyce Mandel's home to make bows, paint sleds and glue snowflakes in a congenial atmosphere with plenty of coffee, tea and seasonal treats. Over the course of 5 in-home workshops, some committee members worked in Joyce's kitchen creating 250 beautiful bows while another group worked in the back yard spray-painting sleds. A few members even took sleds home to spray-paint in their own yards to keep the project on schedule.



By mid-November all the bows, sleds and snowflakes were transported to the Girl Scout House on Burr Road. Soon the building was filled with the scent of pine when the fresh balsam wreaths were delivered on November 14 and wreath assembly began. Committee members diligently wired fancy bows, snowflakes and red sleds over another 5 workshops until every wreath was carefully put together. By the day after Thanksgiving, it was time for 250 wreaths to go home with Garden Club members, merchants and the public.



Thanks to all the Committee Members who made this year's Holiday Wreath Sale another successful fundraiser for the Garden Club of Hingham; your hard work and dedication made all the difference to our project. See you next year!

-Penni Hughes



Visiting Gardeners



On May 18, our Garden Club visited Queen Anne Nursing Home in Hingham. We had a large group of 18 and together made arrangements of white roses, hot pink sweet william, blue iris and vibrant green button poms. They were arranged in bright flower pots in various spring colors. The residents were so appreciative and enjoyed their time with our committee, laughing and engaged in conversation. At the end of our time, we were presented with a certificate of appreciation for our contributions to Queen Anne Nursing Home.

- Melissa Bednarski





Field Trips

On Thursday, **September 21** a group of Garden Club members traveled to Newport, RI to enjoy a guided tour of the newly restored **Blue Garden**. One of many famous gardens designed by Frederick Law Olmsted Jr., the Blue Garden was created for Arthur Curtiss and Harriet Parsons James. This wealthy couple commissioned the project in 1908, envisioning a “garden room” of classical proportions colored primarily in purples and blues. After their deaths, the Garden fell into decline until a restoration project began in 2012. The project was completed in 2014 and the site is now available for viewing upon special request. Hingham Garden Club members enjoyed a narrated tour followed by lunch at a nearby restaurant.



Later in **November**, Club members enjoyed a visit to **Christmas at Blithewold** in Bristol, Rhode Island. Blithewold, a 45 room mansion set on 33 acres is recognized as one of the most nationally significant “fully developed examples of the Country Place Era.”

Each year between Thanksgiving and Christmas the mansion and gardens are transformed into a dazzling showcase of seasonal decorations celebrating the magic of the holidays.



Horticulture Committee

The Horticulture Committee met to create some hypertufa planters. This is a great project and makes planters that are especially good for succulents. They can, theoretically be made almost any size as long as you have two containers, one of a slightly smaller size. We used kitchen bowls of various sizes for the project.

Give it a try! The simple recipe follows:

- 1 part dry cement powder
- 1 part peat moss
- 1 part vermiculite

Mix thoroughly in a plastic bucket or container and mix in water until it makes a thick paste that will hold together.

Use petroleum jelly to grease the inside of the larger bowl and the outside of the smaller one. Cover the greased surfaces with plastic wrap. This protects the bowls and insures that the planter is easily removed.

Now evenly press handfuls of the mixture into the lined surface of the larger bowl until there is an even layer between them when you press in the smaller bowl.

Press down on the edges to compact and smooth them out.

Let this cure at room temperature for a couple of days until it seems firm enough to unmold. After unmolding, carefully drill a drainage hole by setting the bottom on a scrap of wood for support and making the hole from the inside out.

Use this time to smooth off any bumps with a rasp and set the container to fully cure for three or four more days. If you are planting succulents, mix some leftover vermiculite with potting soil to improve drainage.

If you really get ambitious you can make really big ones by using the same procedure with strong cardboard boxes. Put a drain hole made by cutting the mouth off of a plastic water bottle and placing it in the bottom filled with wadded paper to keep the mix out of it. Large hosta leaves lining the larger mold will leave an attractive natural pattern on the outside when finished. A wine carton with dividers makes a good inner mold as it is strong. Do cover the boxes with plastic wrap so that moisture from the mix does not weaken them. These will be heavy, so make them where you can easily leave them to cure for a week before pulling off the box molds.

Go big, go small, have fun!

Susan Zuger





*On a frozen twig,
The little bird dreams of spring.
Oh! To see the sun!*

Winter is a special time for gardeners. It provides an opportunity to accomplish important tasks. The American Organic Gardener recommends doing the following:

- Visit a greenhouse or botanical garden
- Sharpen and oil tools
- Check on bulbs and seeds
- Keep up the compost
- Plan to grow something new
- Clean your houseplants
- And remember to feed the birds



Many thanks to members who submitted photos
or text for this edition.

-Carolyn Clark (editor)

